



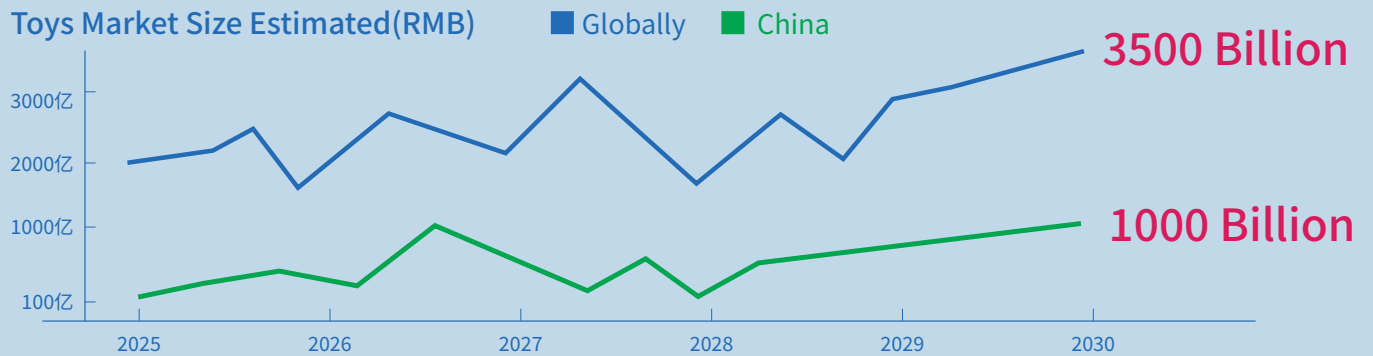
*AI+ Smart Device Solution Provider*



AI For Toys

# Helping you to land your AI+ IP ideas

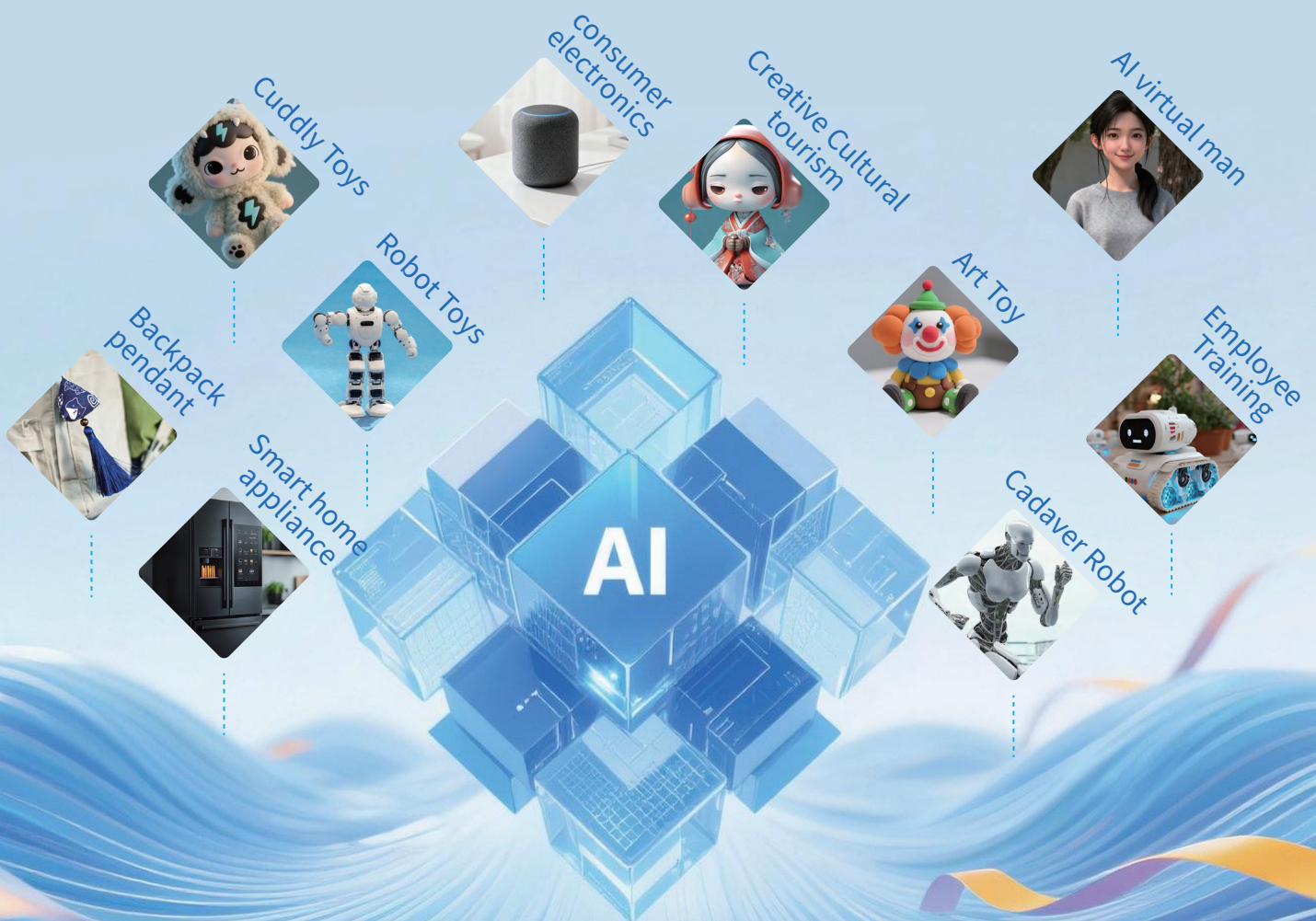
Focus on providing AI+Smart hardware solutions for customer IPs, creating IP differentiated value, enhancing new product production and delivery capabilities, and accelerating new product time-to-market.



Official guidance document

•《Opinions on the in-depth implementation of the 'Artificial Intelligence'》 2025-08-26

•《Guangdong Province to accelerate the promotion of artificial intelligence-enabled toy industry action plan (2025-2027)》 2025-09-03



Enriching AI Intelligent Innovation Application Scenes

# Company profile

Joinet was established in Zhongshan City, Guangdong Province, China, belongs to the Joinet Technology Group, which is a national high-tech enterprise in Guangdong Province. And AI + smart device solutions is the key business, providing customers with AI smart device development, APP cloud services and solutions. with the cutting-edge R & D capabilities in hardware technology, excellent manufacturing capacity and customized engineering services, Joinet offers AI smart device PCBA/FPCA solutions and engineering manufacturing services to global customers.

Our mission is to enable AI technology from the cloud to the terminal through hardware and software co-innovation to create safe, efficient, and inclusive AI intelligent products and experiences; empowering a safer, smarter, and better life with AI technology and this is the vision we continue to strive for.



High-tech Enterprise

**20+** year  
Milestones

**40000+** m<sup>2</sup>  
Manufacture-base

**100+** items  
Property rights



**1000+** Million  
PCBA annual capacity





Teach For Fun  
Learn For Fun  
Teach For heart

AI toys provide personalized learning, education and entertainment experience by carrying AI Artificial Intelligence big model. Using voice, image recognition, natural language processing, deep learning, emotion analysis and other technologies to achieve human-computer interaction and feedback.

APP application development for cloud/intelligent terminals	Hardware In/Output Customised Devel.
 <b>One-stop Solution Service</b> 	
Multi-device interconnected interaction/multi-modal	AI Brain + Executive Parts Integration

## AI Voice Chat Solution

Our company develops a generative voice chat and multimodal interactive intelligent hardware solution based on general-purpose AI large models, including DeepSeek, OpenAI, ERNIE Bot, Tongyi Qianwen, Doubao, Gemini, and Nova.

### Programme Features

**•Multi-modal wake-up method**

Supports multiple communication versions such as WiFi/BLE/BT/4G; Supports multiple wake-up modes such as button, voice, touch sensing and visual; Long battery life;

**•Multi-scene interaction capability**


Fast voice response, long memory accompaniment, private chat, storytelling, interactive games, encyclopaedia, multi-language learning/translation, learning quizzes and more!

**•Custom creation of AI intelligence**

Supporting IP or data application productization, such as emotional intelligence interaction, emotion recognition, interest discovery, custom creation/customisation of intelligent roles, voice cloning,etc.

**•Multi-interaction fusion technology**

Real life style smooth dialogue, continuous dialogue, interrupt at will, dual screen/motor-driven technology, support (voice/eyemovement/gesture/visual) emotional expression, real-time dynamic/motion interaction;

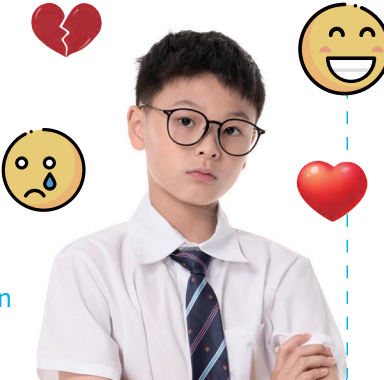


Voice Chat

Long-memory companies

Detect Emotions

Emotional Connection



Catering to the interests and emotions of Gen Z and younger users

Global deployment Multiple communication versions 80+  
Multiple national or regional languages Multimodal interactive experience

Helping customers transform AI technology enabled IP into business value



Open AI



Deepseek



Qwen



KIMI



Z.ai



Cici



iFlytek Spark



ERNIE Bot

## Basic version

Ready-to-install and ready-to-use experience with modelled AI hardware and software voice-chat solutions

## Customised version

Customised AI hardware and software multimodal interaction solutions according to customer's IP product form and technical requirements.



# AI Audio Module

An excellent intelligent agent won't chat aimlessly



### Configuration

Access to multiple large models such as DeepSeek-V3, Cici, ERNIE Bot, Z. AI, MiniMax, DeepSeek, iFlytek Spark, Qwen, and Coze AI; support for a variety of intelligences, continuous dialogue, support for dialogue interruptions, and voice awakening.

Standard with dual microphones, 800mAh polymer lithium battery, 3W composite speakers; external buttons, charging cable (the standard cable length of 20cm)

Comm. method <b>WiFi/BLE/BT/4G</b>	Charing Mode <b>Type-C</b>	Module Version <b>Basic/Perception/Vision</b>
---------------------------------------	-------------------------------	--

# AI Audio display Module

Having a deeper conversation



### Configuration

Access to multiple large models such as DeepSeek-V3, Cici, ERNIE Bot, Z. AI, MiniMax, DeepSeek, iFlytek Spark, Qwen, and Coze AI; Supports multiple intelligences, continuous dialogue, support for dialogue interruption, voice wake-up, emotion recognition, dynamic expressions; standard 10 kinds expressions.

Standard with dual microphone, 800mAh polymer lithium battery, 3W composite speakers; standard 0.71" screen, row cable length 10cm (no eye bracket)

Comm. method <b>WiFi/BLE/BT/4G</b>	Charing Mode <b>Type-C</b>	Module Version <b>Basic/perception/Vision</b>
---------------------------------------	-------------------------------	--



Explore highly integrated AI hardware technology application solutions with smart terminals

# AI Keyboard/mouse Solutions

AI Speech Recognition, AI Speech Q&A keyboard and mouse solution based on the AI Universal Big Model, providing speech recognition input, generative Q&A, AI creation and other capabilities



## Solutions Feature

Resolution 1200-4000 dpi      Wireless distance 10 metres, sound pick-up distance 1 metre  
Supports Bluetooth 5.2, Starburst SLE, Wireless 2.4 tri-mode connection  
Provides speech recognition input, generative Q&A, AI creation and other capabilities  
Support system: Windows 7/8/10/11, MacOS 10.15+

Exploring the full spectrum from AI technology to user experience



• Intent Recognition  
Emotional needs

• AI macromodels  
Management platform

• Precise sound  
Low Latency Response

• 80+ languages  
High identification accuracy

## Intelligent Interaction Virtual Reality

### • AI+Smart Hardware Technology Integration

Holographic imaging technology; Automatic Speech Recognition (ASR); Natural Language Processing (NLP); Text-to-Speech (TTS); NFC RF read/write technology; Supports multiple wake-up modes such as keystroke/voice/touch/visual

### • Customised services

Provides highly customised holographic AI virtual digital human solutions for cultural and creative IPs, realizing a matrix of virtual and real fusion products, and constructing an immersive cultural experience for users with time and space folding scenes and multi-line narrative modes. We can also provide customised development services according to the needs of different industries and product forms in different fields.

### • Management platform system

Through the fusion of speech synthesis, machine learning (including NLP and computer vision), sensor technology (motion/expression capture) and virtual digital human technology, we build an intelligent voice chat management platform system that supports multimodal interaction.

### • Multi-modal Interaction Experience

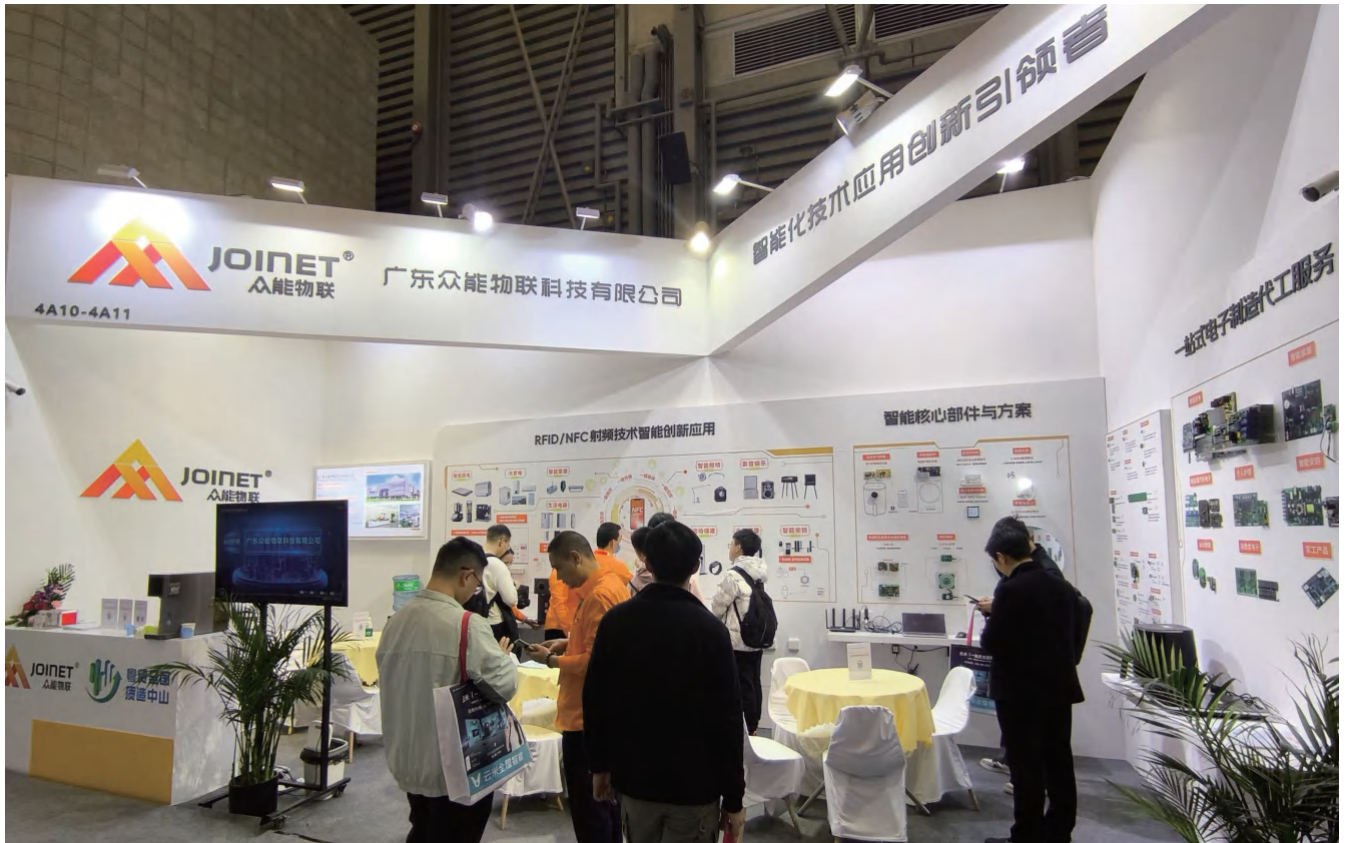
Customised creation of virtual digital human characters, NFC free switching virtual digital human characters, with the ability to understand and respond to human language, but also through rich voice and action expression, to provide users with a more vivid and realistic 3D virtual digital human and human multimodal interaction experience.

## Holographic

# AI Virtual Digital Human Solution

New Product Matrix for IP Realization with Frontier Technology  
/ AI Modelling / Product Innovation

# Exhibition Highlights



Guangdong Joinet IOT takes the exhibition platform as a bridge to show the company's R&D innovation and manufacturing capability to new and old customers. Through each exhibition, we can gain a deeper understanding of the current market trend, and accurately meet the AI+ smart device technology needs of customers, so as to bring a better quality and more reliable product experience, in order to cope with the challenges and opportunities brought about by 'AI Artificial Intelligence+'



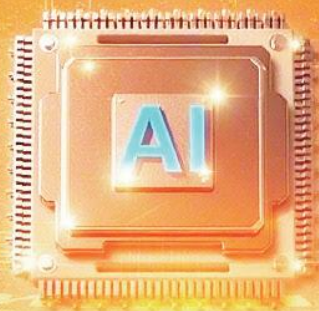
AI technology-enabled IP co-creativity



### From 'Ice Cold' to 'Know Your Heart'

Meet your best friends who recognise you, remember you, with you., share your joys, pleasures and sorrows!

> Provide creative design customisation service for AI Tide Play IP contracted artists <



Enabler Robotic

Grasp the development trend of AI Artificial Intelligence +  
Mastering the future



Official TikTok



Wechat Channel



Website



Account

## ***Guangdong Joinet IOT Technology Co., Ltd***

Headquarters: Xinhai Central International Business Center Building,  
No.9 Qianshan Road, Xiangzhou, Zhuhai

Production Base: Joinet Technology Park, No.168 Tanlong North Road, Tanzhou Town,  
Zhongshan City

Tel: 0760-8663 0003 19966308713

Email: [sw@znaiot.com](mailto:sw@znaiot.com)

Official Web: [www.znaiot.com](http://www.znaiot.com)