




Making Retail Innovation More Successful

Guangzhou Lead IoT Technology Co.,Ltd

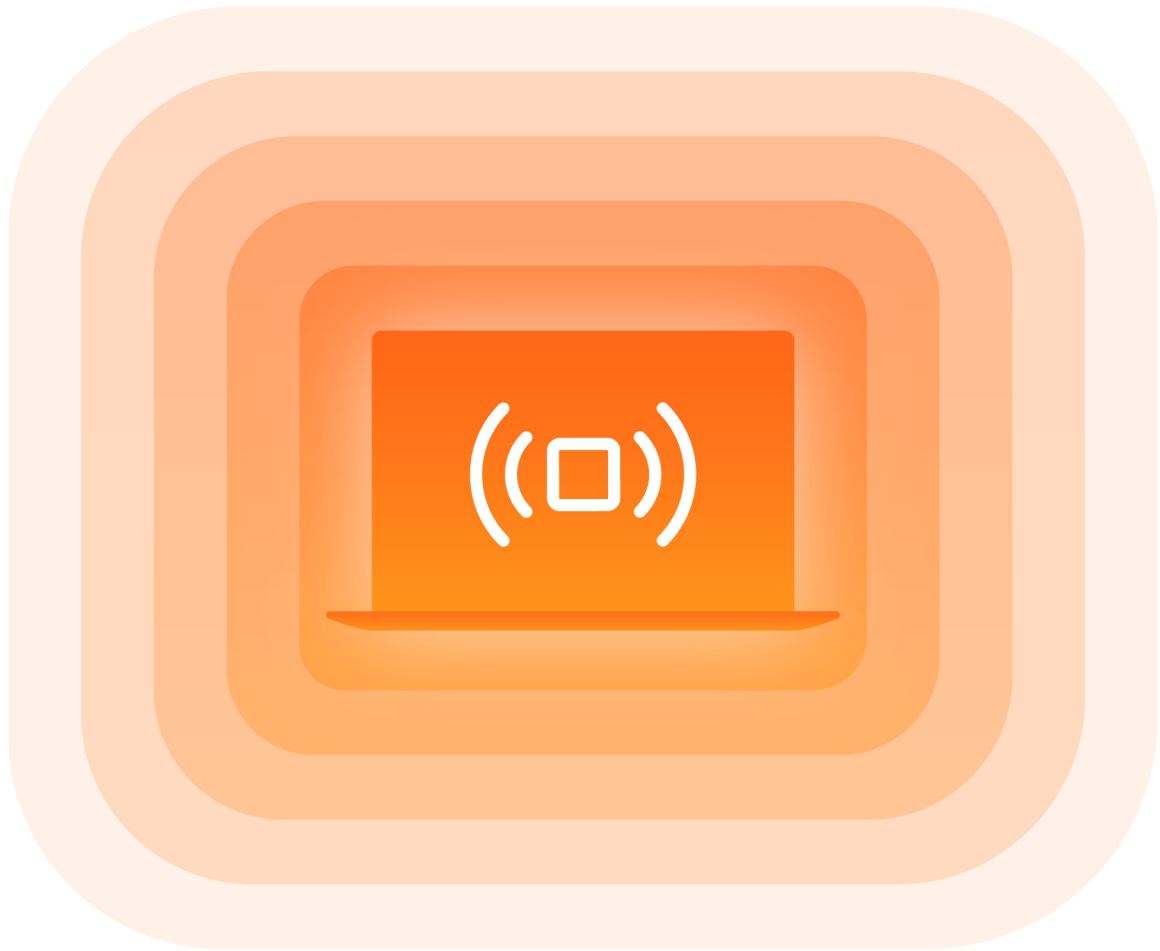
 +86 400-881-8020

 info@centurylead.com

 Building A07, Yuzhu Zhigu Industrial Park, No. 9 Maogang South Road, Huangpu District, Guangzhou City

INSCRE RFID SYSTEM PRODUCT SOLUTIONS

OPEN THE DOOR TO RFID DIGITALIZATION AND INTELLIGENCE



Century Lead[®]

» Company Profile

Century Lead founded in 2014, provides integrated solutions for fashion clients, including software, hardware, RFID tags, and full-chain digital intelligence applications. Our core team has 25 years of experience in the apparel and footwear industry and 11 years in RFID solution technology application for the same sector. To date, we have developed digital intelligence applications for over 100 leading fashion brands, hold more than 50 software copyrights and 2 patents, and have received numerous awards and recognitions.

Our headquarter is located in Guangzhou, deeply rooted in China while serving globally. We provide high-quality RFID solutions and products for fashion brands worldwide.

11 years of
applying RFID technology
in the fashion sector

25 years of
experience in fashion
industry digitalization

100 +
successful case studies
with fashion clients



» Our Clients

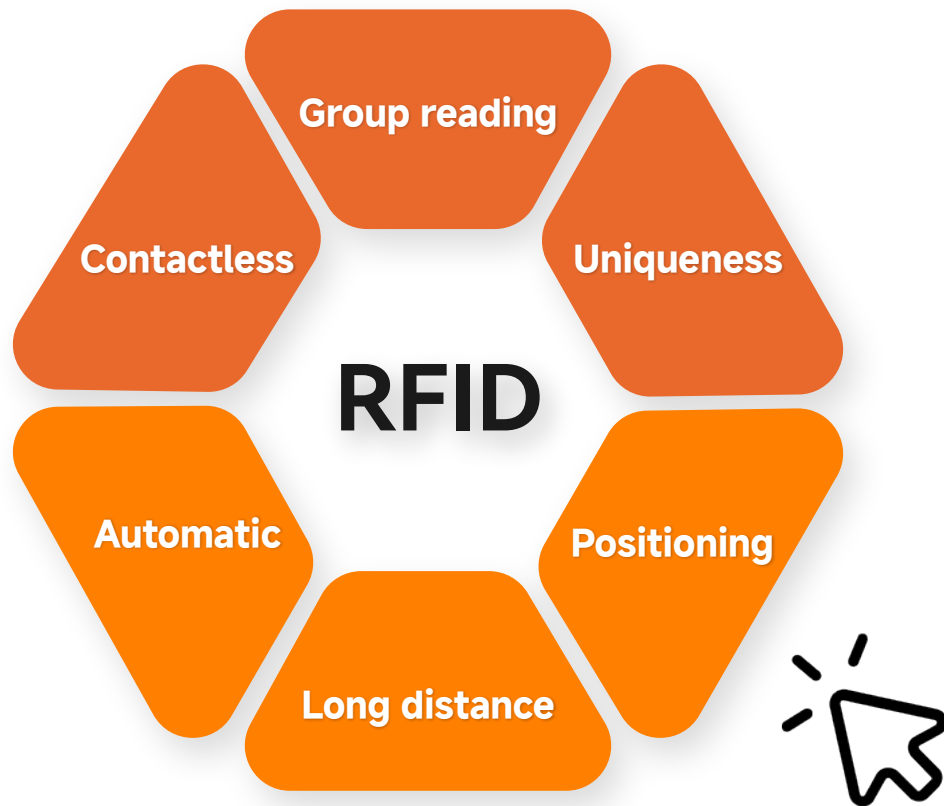


Focus On
The Fashion Industry

Serving 100+
Fashion Brands

» Why Choose RFID?

Radio Frequency Identification (RFID) is the most important perceptual identification technology in the Internet of Things



TRACEABILITY

Through RFID unique code management, it provides effective anti-counterfeiting traceability means



EFFICIENCY

RFID group reading technology effectively improves the efficiency of warehouse and store operations



ACCURACY

Effectively improve the accuracy of factory packing, warehouse warehousing, store allocation and inventory



» Why Choose SaaS?

SaaS Model	Custom Project
Radio Frequency Identification (RFID) is the most important perceptual identification technology in the Internet of Things	High one-time investment, with ongoing custom development and maintenance costs, prone to budget overruns
Rapid deployment and onboarding, companies can start by simply creating an account	Long development cycle, but can deeply match unique business processes
Standardized modules for easy future expansion; subscribe on-demand	Highly flexible, but poor architecture planning may lead to future compatibility issues during expansion
Upgrades and maintenance handled by the provider	Relies on internal IT skills for support, company has full control over data and system

Suitable For:

- SMEs looking for low-cost, quick-results digital management initiation
- Lack of professional IT ops teams, seeking to avoid complex system maintenance

» Why Choose Inscree RFID System?

Technology Vanguard

Powered by cutting-edge RFID technology, our system ensures precise identification (99.9%+ accuracy) and stable data transmission, providing a solid and reliable technological backbone for the supply chain management of global fashion brands.

End-to-End Empowerment

We provide a full-chain digital solution from factory, warehouse to store, breaking down information silos and enabling seamless, visible, and efficient management across your entire operation.

Fashion Industry Tailored

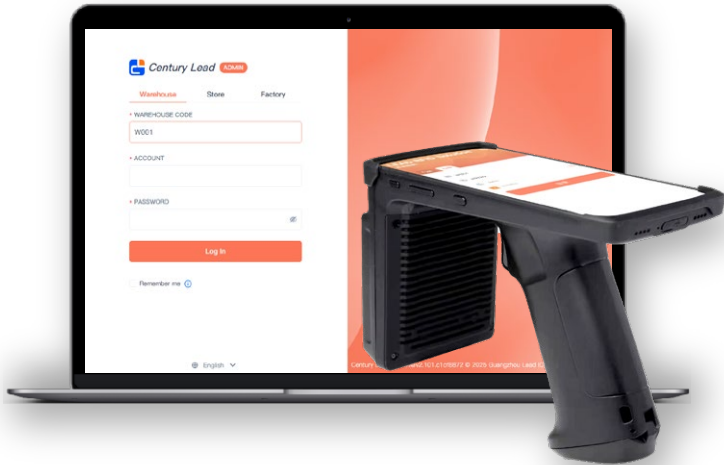
Our solutions are deeply customized for the apparel, footwear, and bags industry, incorporating insights into seasonal trends and SKU complexity to deliver intelligent management features that address your specific challenges.

Global Service Support

With a proven track record of serving over 100 fashion brands, our network across key domestic and international markets ensures you receive timely and professional local support.

» RFID System

Inscre RFID is an innovative SaaS-based RFID system, cost-effective and quick to deploy, helping growing brands rapidly achieve digital RFID management and anti-counterfeiting traceability.



Real-time update

Fast Checkout

Supply Chain
Transparency

Data
Synchronization

Efficient
Warehousing

Automated data
capture

Faster Response

Intelligent
Decision Support

Theft and Loss Prevention

VERSION SELECTION

Sample Version

- Sample Inbound
- Inventory Check
- Borrow/Return
- Locate Samples
- Bind / Unbind
- Traceability
- Damage Report
- Transfer

Standard Version

- Factory packed
- Warehouse Shipping
- Store Shipping
- Scheduled shipment
- Batch Inspection
- Store Inventory
- Appointment Audit
- Warehouse Relabeling
- Store Item Lookup
- Warehouse Receiving
- Store Receiving
- Label Inspection

Optional Modules (Additional Charge)

Label Printing

Fitting Room Data

Self-Checkout

Loss Prevention

Low Initial Investment

Compared to costly custom projects, SaaS offers lower upfront costs and eliminates redundant spending on tech upgrades.

Fast ROI

Pre-built industry templates and standardized deployment enable rapid setup—sample garments in as little as 7 days, with full rollout averaging 35 days.

Scalability

Flexible subscription models (annual, per-tenant, or one-time purchase) adapt to business growth.

» A more efficient RFID solution

Smart Factory

- Label Printing
- Factory Packed
- Scheduled Shipment

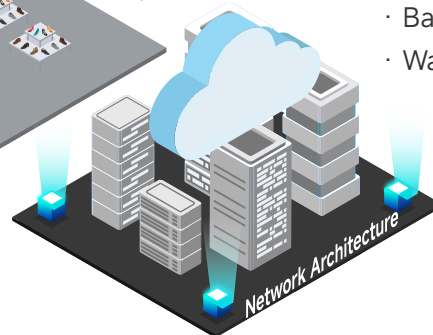


Smart Warehouse

- Appointment Audit
- Warehouse Receiving
- Warehouse Shipping
- Batch Inspection
- Warehouse Relabeling

Smart Store

- Store Receiving&Shipping
- Store Inventory
- Store Item Lookup
- Label Inspection
- Fitting Room Data
- Self-Checkout
- Loss Prevention



99.99%

Over 99.9%
inventory accuracy

Uniqueness

Unique digital
identity for each item

Full coverage

End-to-end efficiency
improvement

» Factory Management

Create a whole RFID unique code solution



100% ↗

Factory data is true and transparent

< 99.9% ↗

The packing accuracy is improved to 99.9%

100% ↘

Save manpower input

100% ↗

Improve delivery efficiency

Precise packing management

According to the single packing, the RFID single product unique code and the outer box label form an association relationship to achieve accurate packing

Improve delivery accuracy

RFID unique code management, brands and factories can know the real delivery situation

Improve supply chain management

RFID is a supplier traceability and a reliable supplier system is established(establish a reliable supplier system)

Increase the speed of factory operations

Flatbed packing can be read in batches of multiple pieces, avoiding the inefficiency and errors of manual counting

» Warehouse Management

Empowering Faster and More Transparent Logistics



500% ↗

Improve the efficiency of receiving

20% ↗

Improve the accuracy of receiving

200% ↗

Improve the efficiency of delivery

15% ↗

Improve shipping accuracy

Improve job accuracy

According to the single packing, the RFID single product unique code and the outer box label form an association relationship to achieve accurate packing

Accelerate supply chain response

RFID unique code management, brands and factories can know the real delivery situation

Strengthen brand protection

RFID is a supplier traceability and a reliable supplier system is established(establish a reliable supplier system)

Supply chain traceability and anti-channeling

Flatbed packing can be read in batches of multiple pieces, avoiding the inefficiency and errors of manual counting

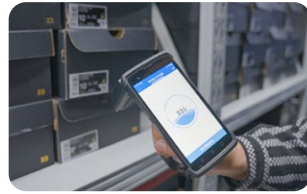
» Store Management

Optimize Store Product and Inventory Management



10% ↑

Improve inventory authenticity



300% ↑

Improve inventory efficiency



60% ↑

Improve the speed of goods finding



500% ↑

Improve the efficiency of receiving

Receiving and shipping management

Through the RFID handheld machine batch reading, it can realize the receipt without unpacking; RFID unique code to achieve refined delivery/allocation

Inventory and finding

Inventory and goods search through RFID equipment are twice the result with half the effort compared with traditional methods

Reduce the risk of stock-outs

The in-store inventory accuracy rate of up to 99% can effectively reduce the risk of stockouts and help increase sales

Unique code traceability

The unique RFID code that cannot be tampered with helps the whole process of product traceability and ensures the authenticity and reliability of data

» Optional Modules

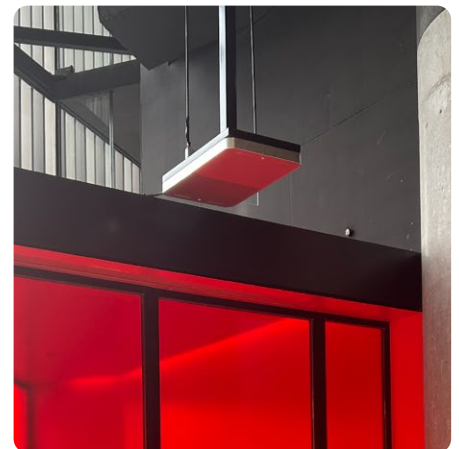
Fitting Room Data



Self-Checkout



Loss Prevention



» Anti-counterfeiting And Anti-cross channel

Compared with traditional unique codes, RFID unique codes are inherently tamper-proof. This feature enables the tracking of a product throughout its entire lifecycle, effectively preventing cross-channeling (diversion) and counterfeiting.



Repository node records

Through the INSCRE warehouse node, the shipping information (date, recipient, etc.) is recorded.



Production records

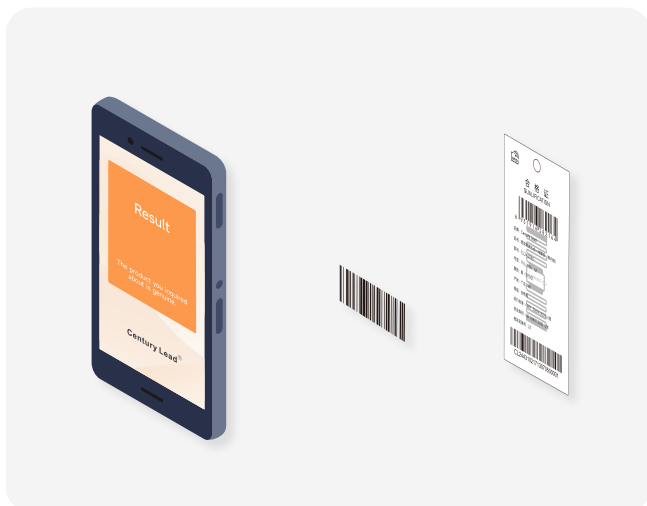
Through the Inscree factory node, the manufacturer's information is accurately recorded



Retail node records

Through the Inscree store node, the sales information is recorded

INQUIRY BY MOBILE PHONE



INQUIRY BY HANDHELD RFID READER



Tamper-Resistant



Quality Traceability



Rapid Verification



Information Sharing



PRODUCT INFORMATION



Color: Black
Size: 180-XL
Item Number: CL-123549
¥599.00



» Sample Management

Is your business facing the following challenges?

⦿ Slow Inventory Checks

Traditional methods waste time and increase errors.

⦿ Hard to Find Samples

No real-time visibility on sample status or location.

⦿ Chaotic Tracking

Frequent movement leads to lost or misplaced samples.

⦿ Error-Prone Data

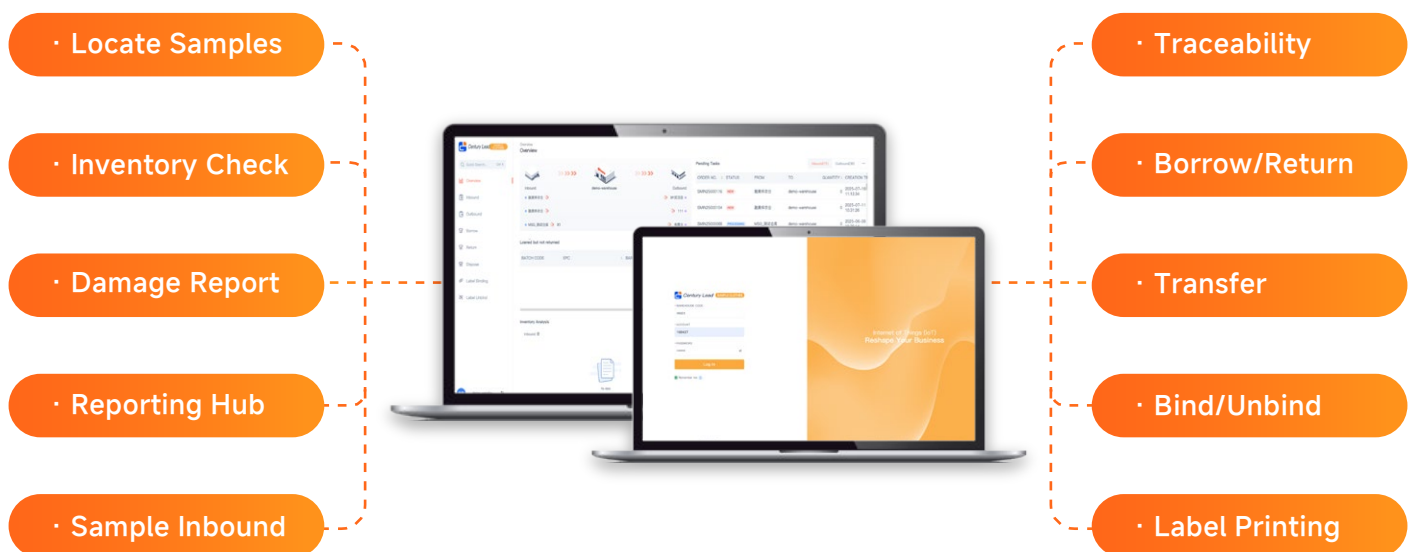
Manual records cause inaccuracies in inventory stats.

⦿ Borrowing Issues

Unreturned or mismatched samples disrupt workflows.

What is an RFID sample garment management system?

The RFID Sample Garment Management System is an innovative solution that leverages Radio Frequency Identification (RFID) technology to efficiently track and manage sample garments. By attaching RFID tags to each sample and utilizing RFID readers and management software, this system ensures seamless tracking and control of samples throughout their lifecycle.



» Application Value

BEFORE

Duplicate Data Entry

Paper/Excel records led to repetitive manual input.

Hard to Locate Samples

Disorganized storage made finding specific styles time-consuming.

Security Gaps

No formal tracking for loans/returns, increasing theft/loss risks.

Inefficient Audits

Manual counts were slow, labor-heavy, and error-prone.

Dead Stock Piles

No system to flag unsold samples promptly.

NOW

One-Time Registration

RFID tags enable single-entry, lifecycle tracking.

Instant Search

Handheld scanners guide users to exact sample locations.

Smart Alerts

Real-time monitoring reduces loss/theft risks.

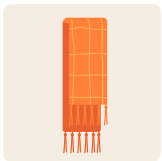
Effortless Audits

Batch RFID scans auto-generate accurate reports.

Optimized Flow

Analytics highlight slow-moving stock for quick action.

PRODUCT INFORMATION

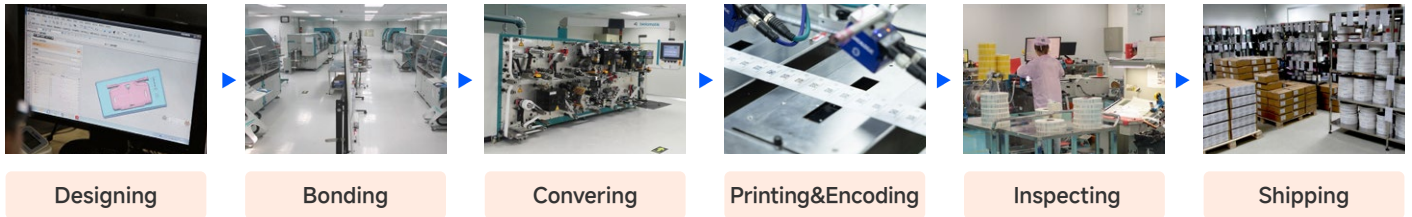


Color: Bright Orange
Size: 175-L
Item Number: CL-85649
¥149.00



» RFID Tags

We have established a full industrial chain presence in RFID, covering chips, tags, devices, and systems — delivering lower costs, faster delivery, and more reliable solutions. One in every five RFID tags worldwide comes from our factory, with a 100% project success rate.



Singel Hang Tag

Sleek design — chip embedded in hangtag center for a stylish, brand-enhancing look.

35x70、40x90、45x98、50x110、52x105 (mm)

*The above sizes come with cutting dies, Other sizes can be customized.

Roll Hang Tag

Easy to use — roll-format hangtags allow self-printing, easy operation, and tear-resistant material.

40x65、40x90、40x100、55x95、55x110 (mm)

*The above sizes come with cutting dies, Other sizes can be customized.

RFID Stickers

High cost-performance — attach directly to products or hangtags for fast inventory and easy traceability.

40x77、54x34、57x36、60x40、43x21、45x19、47x32 (mm)

*The above sizes come with cutting dies, Other sizes can be customized.

RFID Care Label

Care labels embed in products for anti-counterfeiting, unique ID, and full lifecycle tracking.

18x42、34x24、40x70、50x34、58x27 (mm)

*The above sizes come with cutting dies, Other sizes can be customized.

RFID Steel-Blade Mechanical Lock Tag

Durable & reusable — combines theft prevention with inventory management for quick stocktaking.

72.5*29.7*19.1mm
12g (PCS)

*Metals and liquids will affect RFID reading performance

» RFID Devices

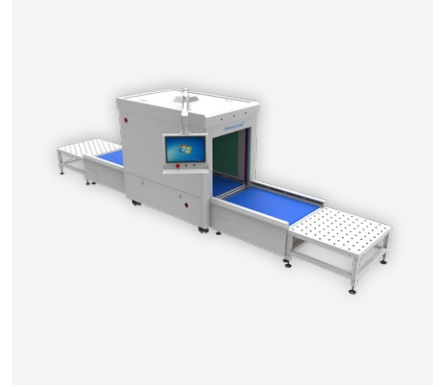
UHF Fixed RFID Reader



Handheld RFID Reader



RFID Channel Machine



RFID Anti-theft Device



RFID Fitting Room Tracker



RFID Self-Checkout Machine



RFID Printer



» Customer Case

VOIR GALLERY

Malaysian fast fashion brand

Background

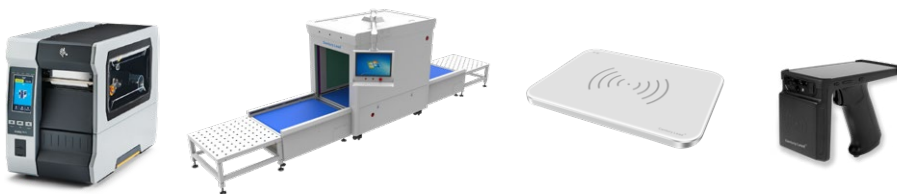
VOIR GALLERY is a well-known Malaysian fashion retail chain brand, primarily offering affordable men's and women's apparel, accessories, and multi-brand selections, catering to the mass consumer market. It is a significant choice for mass fashion consumption in Malaysia due to its high value, flexible promotions, and extensive store network.

Value

Operational Excellence & Agility: Streamline warehouse processes (inbound/outbound, location management) and enable rapid store transfers. This reduces lead times and optimizes inventory, ensuring products are where they're needed, faster.

Transparency & Trust: QR-based anti-counterfeiting and full carton receipts create a secure, verifiable chain of custody. This builds consumer confidence and protects brand value.

Data-Driven Intelligence: Smart stores and detailed stock locating provide real-time insights into inventory and customer behavior. This allows for precise demand forecasting and personalized engagement.



Solution

- **RFID Tagging:** Each Commodity gets a unique RFID tag for instant ID.
- **Equipment Deployment:** RFID devices are installed at VOIR GALLERY's factory, warehouse, and store to streamline goods receipt, dispatch, and inventory management.
- **System Benefits:** The deployed RFID system enables automated data collection, optimizes operational processes, and provides decision support.

Keywords:

Inventory

Anti-Counterfeiting

Supply Chain Management

ALLY FASHION

Australian fast fashion brand

Background

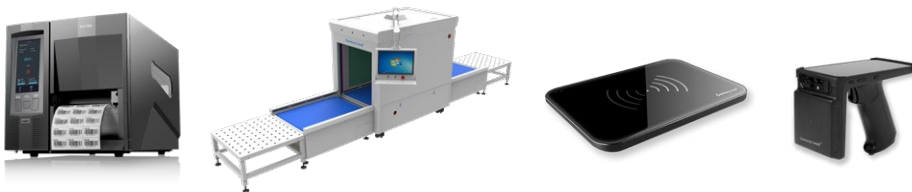
ALLY FASHION, founded in 2001, is an Australian fast-fashion brand for young women. It introduces over 50 new styles weekly, with each store carrying at least 300 styles and 5,000 items in stock. The brand has over 140 physical stores in Australia.

Value

Agile & Efficient Operations: The brand achieves rapid market response through a streamlined supply chain and smart warehouse management, enabling fast store transfers and precise stock locating.

Transparent Consumer Trust: It builds brand authenticity and consumer confidence with a robust anti-counterfeiting and traceability system for every product.

Data-Driven Intelligence: Smart stores with real-time inventory visibility allow for optimized stock levels and an enhanced, seamless shopping experience.



Solution

- **RFID Tagging:** Each Commodity gets a unique RFID tag for instant ID.
- **Equipment Deployment:** RFID devices are installed at ALLY's factory, warehouse, and store to streamline goods receipt, dispatch, and inventory management.
- **System Benefits:** The deployed RFID system enables automated data collection, optimizes operational processes, and provides decision support.

Keywords :

Intelligent Retail Inventory

Transparent Brand Traceability

» Services



Solution Consulting



Requirements Gathering



Setting & Deployment



System Launch



System Development



Internal Training



Provides 12/7 service



Provide on-site technical support



Provide system development support

Century Lead[®]