

XINYE 鑫业智能

XINYE INTELLIGENT CO.,LTD

(Introduction)



CONTENTS



01. Company Overview



02. Core Competencies



03. Products and Applications



04. Manufacturing Process



05. Future Planning



06. Partners and Qualifications

01

COMPANY OVERVIEW



**Company Basic Information、 Organizational Structure、
Milestone、 Market Distribution**





Established: 2008



Registered Capital: 900W (USD)



Factory Area (including under construction): 30000m²



Number of Employees: 220 people



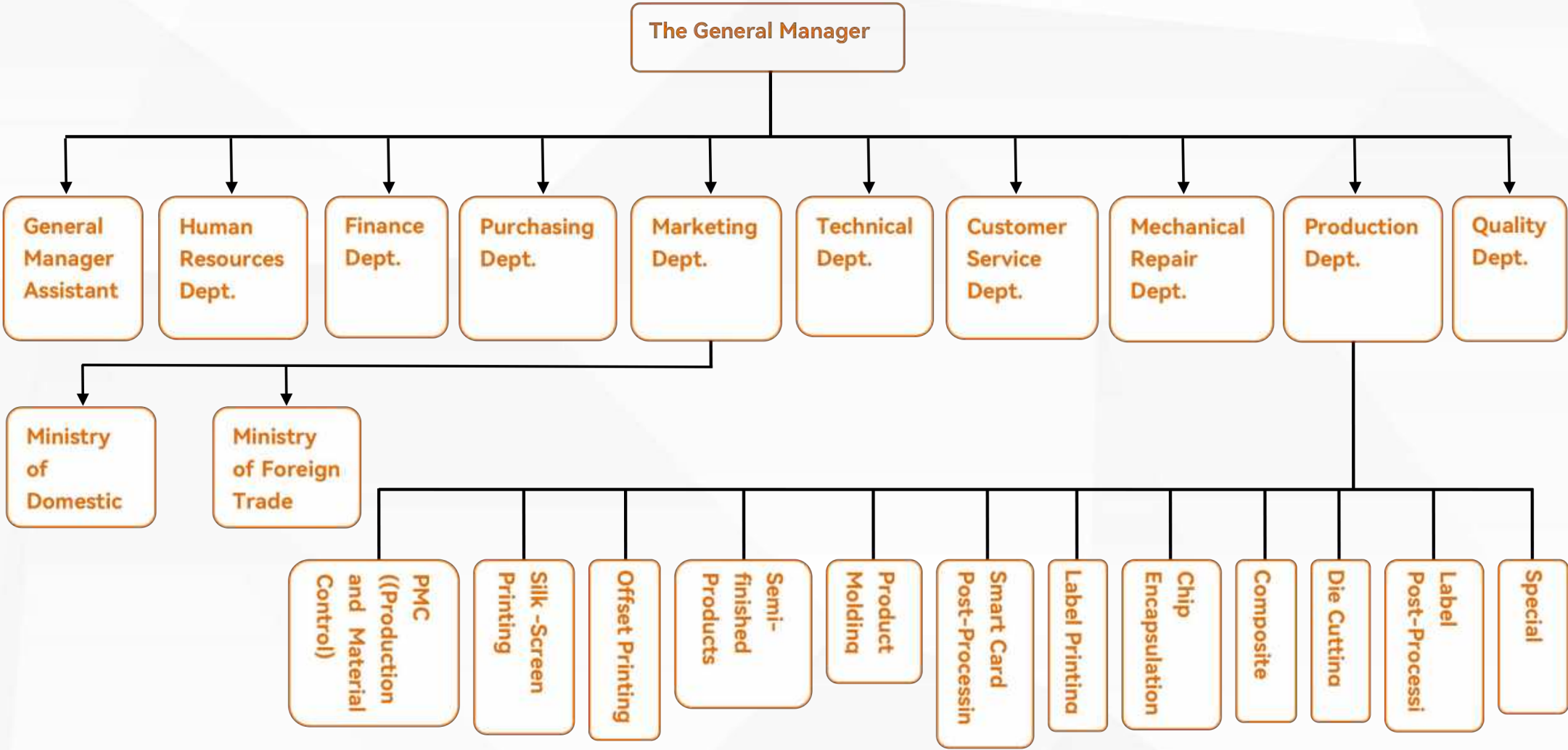
Core Certifications & Patents:

- ISO 9001/14001/45001
- IATF 16949 (Automotive Industry)
- RFID technology patents 50+



Mission & Vision: Customer-centric approach in manufacturing world-leading smart label products.

ORGANIZATIONAL STRUCTURE



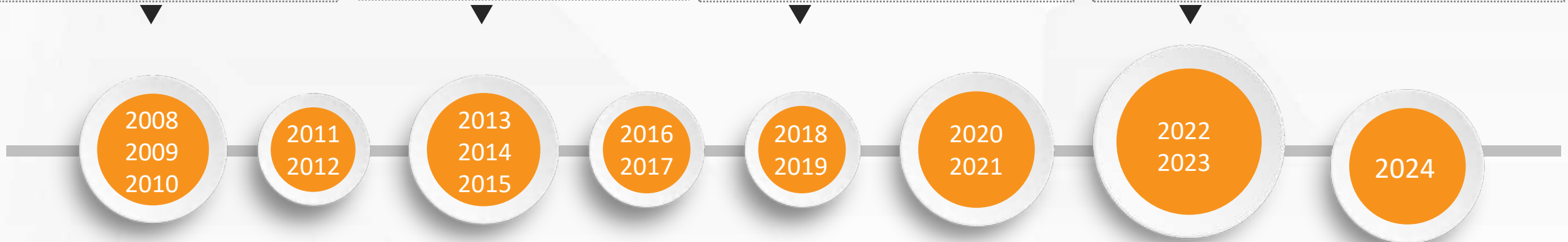
MILESTONE

2008: Xinye was established, marking the beginning of its journey in manufacturing and innovation.
2009: After achieving ISO 9001 triple system certification, Xinye launched its presence on both the Alibaba International and China platforms, strategically expanding into the global market.
2010: The company introduced top-tier domestic RFID encapsulation equipment and obtained the National Industrial Production License.

2013: Participated in six domestic and international exhibitions, achieving significant progress in foreign trade performance.
2014: The company began implementing the 5S management system.
2015: The workshop was renovated and expanded, further enhancing production capacity and product quality.

2018: Relocated to Dongguan Industrial Park, further expanding production capacity and enhancing the company's competitiveness.
2019: Introduced a series of advanced production equipment, improved production line construction, and reinforced the customer-centric development philosophy.

2022: Continuously enhanced its learning efforts and boldly ventured into innovation, earning the Dongguan Municipal "Specialized, Refined, Distinctive, and Innovative" Certification.
2023: Demolished outdated facilities and commenced new construction by initiating projects for a comprehensive office and production building as well as employee dormitories. Successfully passed the certifications from the Dongguan Municipal Engineering Technology Research Center and IATF 16949.



2011: Expanded into overseas markets and participated in the French Smart Card Exhibition for the first time.
2012: Introduced the first label composite die-cutting equipment, establishing the development direction for label products.

2016: Acquired an existing industrial park in Dalang, Dongguan, laying a solid foundation for the company's development.
2017: Achieved the National High-Tech Enterprise Certification.

2020: Continually developed new products, receiving the industry's RFID Company Popularity Award and the Excellent Product Award.
2021: Once again, obtained the national-level High-Tech Enterprise Certification, established the Market Operations and Special Label departments, and continuously introduced advanced production and testing equipment.

2024: The industrial park expansion project has been fully launched. Continuous innovation and iterative development in automotive key card technology have garnered increased favor among customers in the automotive industry.

MARKET DISTRIBUTION



China	10%
Europe	40%
North America	10%
Southeast Asia	30%
Other	10%

02

CORE COMPETENCIES

 R&D Capabilities, Manufacturing Capabilities





Xinye Intelligent currently has more than 220 employees, the R&D team of 13 people are composed of hardware engineers, software engineers and product engineers with more than 5 years of experience, and more than 20 professional quality control personnel, building an efficient talent system covering technology development and quality control.



The main laboratory test equipment are:

Tagformance Tag Performance Test Systems (including TIPP Grading Test Black Box), Frequency Meter, Lasting Adhesive Tester, Primary Adhesive Tester, Laser Engraving Machine, Bonding Machine, Temperature&Humidity Test Chamber, Salt Spray Tester, Bending Tester, Xenon-lamp Weatherproof Test Chamber, Folding Endurance Tester, Digital Tension Meter, Heat Distortion Temperature (HDT) and Vicat Softening Point Measuring Machine, Image Measuring Instrument, Angle Measurer, Pinhole Test Machine for Enameled Wire, Peel Tester, etc.



Xinye Intelligent fully enclosed clean workshop is 6,400m², with 2 Heidelberg four-color printing machines and 2 six-color wheel printing machines.

Xinye Intelligent has 20 professional RFID label production lines and hundreds of high-precision smart card production equipment.

03

PRODUCTS AND APPLICATIONS

“ Full-scenario intelligent 、 product solutions



PRODUCT CATEGORIES



RFID Smart Card

IC card, ID card,
Standard card,
Non-standard card,
Paper card, RFID ticket ,
PVC card, PET card,
Magnetic stripe card, etc.



RFID Special Tag

Flexible anti-metal tags
High temperature vehicle tags
Oil pipe tags
PCB tags
ABS tags
FPC tags



RFID Application

Transportation, security,
library management,
supply chain logistics and
warehousing
management, animal
husbandry,
asset management,
medical care,
electricity, petroleum, etc.



RFID Reader

UHF multi-channel reader,
UHF handheld reader,
UHF desktop reader,
UHF antenna,
HF reader



RFID Label

Self-adhesive tags
NFC tags
Disposable wristband
Library tags
Clothing tags
Windshield tags

APPLICATION AREAS

Hundreds of millions of RFID products have been provided to customers around the world and are widely used in NFC KEY CARD, transportation, security, library management, supply chain logistics and warehousing management, animal husbandry, asset management, medical care, electricity, petroleum and other fields.



▲ NFC KEY CARD



▲ Transportation



▲ Security



▲ Library Management



▲ Livestock Industry



▲ Asset Management



▲ Medical Treatment



▲ Electric Power

04

MANUFACTURING PROCESS

 **Lean Production, Quality Assurance**



SMART CARD PRODUCTION PROCESS



Semi-finished Production



CMYK Offset Printing



Silkscreen printing



Encoding / Number Printing



Punching



Combination, Lamination



QC



Package



Finished Product Shipment

RFID LABEL PRODUCTION PROCESS



Chip Bonding



Printing



Compound/Die Cutting



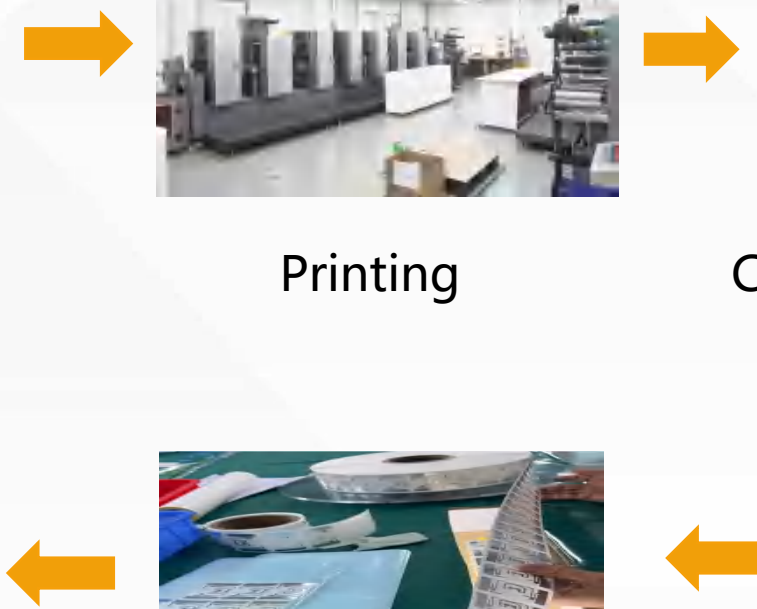
Encoding/
Number Printing



QC



Packing and shipping



05

FUTURE PLANS

Development plan for the next three years





Capacity:

- Smart card capacity increased by 100%.
- RFID tag capacity increased by 200%.



Market development direction:

- Focus on NFC key cards for new energy vehicles.
- IC metal cards for the automotive and financial industries.
- RFID tags for asset management, consumer electronics, oil drilling pipes, port containers, etc.

06

PARTNERS AND QUALIFICATIONS

“ Join hands with customers to create value



Our customers are from all walks of life. Xinye focus on product quality and service, to provide you with overall solutions



QUALIFICATION PATENT

RFID technology patent certificates and honorary awards, etc.



LOOKING FORWARD TO WORKING WITH YOU!



Address: No.58 Fumin South Road, Dalang Town,
Dongguan City, 523781 Guangdong Province, China



Tel: +86-769-83181213



Website: <https://www.xinyetag.com>

THANK YOU